

PART 7

Cabinet Portfolios and Scrutiny Remits, Membership of Committees and the Council's Management Structure

Contents

	PAGE
1 Cabinet portfolios	2-5
2 Scrutiny Committee Remits	6
3 Membership of Committees	7
4 Council's Management Structure	9

CABINET MEMBER PORTFOLIOS

LEADER (CORPORATE STRATEGY AND FINANCE) COUNCILLOR JG JARVIS

- Corporate policies and strategies
- Recommend to Council the Policy Framework (as defined in the Council Constitution)
- Agreeing and leading the process for setting the budget
- Agreeing and leading the process for recommending to Council the Council Tax, NNDR
- Communications Strategy, promotion of the Council and external liaison
- Local Government issues including functions, structure, Boundary Commission
- European, national and regional matters
- Key partnerships including Local Strategic Partnership (Herefordshire Partnership) and the Hereford Futures Board
- Any initiative not specifically allocated to any other portfolio.

CORPORATE SERVICES– COUNCILLOR PD PRICE (DEPUTY LEADER)

- Legal and Democratic Services
- Land Charges
- External and Internal Communications Implementation and Delivery
- Locality Working
- Research
- Shared Services Programme
- Customer Services (including quality assurance, INFO, Insight and feedback)
- Community engagement
- Registration Services (life events)
- Modern Records
- Human Resources & Organisational Development
- Emergency Planning & Business Continuity
- Performance Management & Improvement framework
- Equalities & Human Rights
- Coroner's Service
- Asset management (strategic)
- Property (strategic)
- Risk Management
- Smallholdings Estates
- ICT and e-government
- Information Governance (including security & data sharing)
- Policy development, quality assurance, external liaison, localities development, performance improvement and risk assurance relevant to the portfolio
- Any other specific responsibilities as allocated by the Leader

NB For the avoidance of doubt these responsibilities exclude any functions allocated to the Audit and Corporate Governance Committee.

FINANCIAL MANAGEMENT – COUNCILLOR AW JOHNSON

- Financial practice and standards
- Financial management, business planning and challenge
- Audit
- Housing/Council Tax Benefits
- Corporate Transformation Programmes (Rising to the Challenge, Root & Branch reviews)
- Efficiency & Value for Money
- Policy development, quality assurance, external liaison, localities development, performance improvement and risk assurance relevant to the portfolio
- Any other specific responsibilities as allocated by the Leader

NB For the avoidance of doubt these responsibilities exclude any functions allocated to the Audit and Corporate Governance Committee.

EDUCATION & INFRASTRUCTURE – COUNCILLOR GJ POWELL

Support Team Member: Councillor AM Atkinson

- Broadband
- To provide leadership across the range of Local Authority services and through engagement with a particular focus on education and achievement
- School improvement and achievement
- Services for schools
- Educational achievement of looked after children
- Post 16 education and training
- Lifelong Learning
- Highways policy
- Streetscene design & policy
- Streetscene delivery
- Highways maintenance
- Transportation planning and traffic management
- Parking policy and services
- Policy development, quality assurance, external liaison, localities development, performance improvement and risk assurance relevant to the portfolio
- Any other specific responsibilities as allocated by the Leader

NB For the avoidance of doubt these responsibilities exclude any functions delegated to school governing bodies; AND these responsibilities exclude any functions allocated to the Planning or Regulatory Committees This Cabinet Member exercises education services functions conferred on the lead member for Children's Services in accordance with the Children Act 2004.

ENTERPRISE & CULTURE - COUNCILLOR RJ PHILLIPS

- Cultural Services
- Heritage Services
- Archive Services (public records office)
- Library Services
- Tourism
- Voluntary/Community Sector Support (Strategy)
- Economic Development
- Regeneration Strategy & Projects
- Rural issues including access to services
- Enterprise Zone Programme
- Markets
- Community Safety
- Hereford Futures Programme
- Policy development, quality assurance, external liaison, localities development, performance improvement and risk assurance relevant to the portfolio
- Any other specific responsibilities as allocated by the Leader

NB For the avoidance of doubt these responsibilities exclude any functions allocated to the Planning or Regulatory Committees

ENVIRONMENT, HOUSING & PLANNING – COUNCILLOR RB HAMILTON

Support Team Member: Cllr Paul Rone

- Environmental Sustainability
- Fair-trade and local produce & products
- Common Land
- Land drainage and flood alleviation
- Rivers and waterways
- Gypsies & Travellers
- Planning and land use policy
- Conservation
- Housing (strategic)
- Homelessness, housing allocation and housing condition
- Public Conveniences
- Cemeteries, crematoria and disused burial grounds
- Policy development, quality assurance, external liaison, localities development, performance improvement and risk assurance relevant to the portfolio
- Any other specific responsibilities as allocated by the Leader

NB For the avoidance of doubt these responsibilities exclude any functions allocated to the Planning or Regulatory Committees

HEALTH & WELLBEING – COUNCILLOR PM MORGAN

Support Team Members: Children: Cllr J Hyde Adult Social Care: Cllr N Nenadich

- To provide leadership and ensure co-ordination across the range of Local Authority children's services, and through engagement with partners, with a particular focus on health & wellbeing and safeguarding:
- Children's services including family services and child protection
- Corporate parenting
- Early Years/Sure Start
- Youth Service including youth offending
- Children's social care commissioning
- Lead member for Children's Services in accordance with the Children's Act 2004
- Leadership re Health & Wellbeing Board
- Environmental Health
- Animal Health & Welfare
- Trading Standards
- Licensing
- Environmental promotion and protection
- To provide leadership and ensure co-ordination across the range of Local Authority adult social care services, and through engagement with partners
- Adult social care including Supporting People and Learning disabilities
- Older peoples services
- Adult social care and integrated commissioning
- Safeguarding of vulnerable adults
- Public Health
- Policy development, quality assurance, external liaison, localities development, performance improvement and risk assurance relevant to the portfolio
- Any other specific responsibilities as allocated by the Leader

MAJOR CONTRACTS – COUNCILLOR H BRAMER

- Waste Disposal
- Waste Collection
- Parks and Countryside
- Public Rights of Way
- Leisure
- Procurement (strategic)
- Co-ordination and overview of major contracts (e.g. Amey, HALO) as directed by the Leader
- Policy development, quality assurance, external liaison, localities development, performance improvement and risk assurance relevant to the portfolio
- Any other specific responsibilities as allocated by the Leader

NB For the avoidance of doubt these responsibilities exclude any functions allocated to the Planning or Regulatory Committees

Overview and Scrutiny Committees

Committee	Remit
General Overview and Scrutiny Committee	<p>Functions conferred on or exercisable by the Council in its capacity as a local education authority;</p> <p>Budget and Policy Framework Issues</p> <p>Any other matter not reserved to the Health and Social Care Scrutiny Committee.</p>
Health and Social Care Overview and Scrutiny Committee	<p>To discharge the Council's statutory health scrutiny powers including the review and scrutiny of any matter relating to the planning provision and operation of health services affecting the area and to make reports and recommendations on these matters.</p> <p>Overview and scrutiny of:</p> <ul style="list-style-type: none">• Children and Adult Safeguarding• Social care functions relating to children• the Health and Wellbeing Board• any other matters relating to health and social care

CABINET PORTFOLIOS AND SCRUTINY REMITS, MEMBERSHIP OF COMMITTEES AND THE COUNCIL'S MANAGEMENT STRUCTURE

Chairman of the Council – Councillor LO Barnett
Vice-Chairman of the Council – Councillor ACR Chappell

MEMBERSHIP OF COMMITTEES

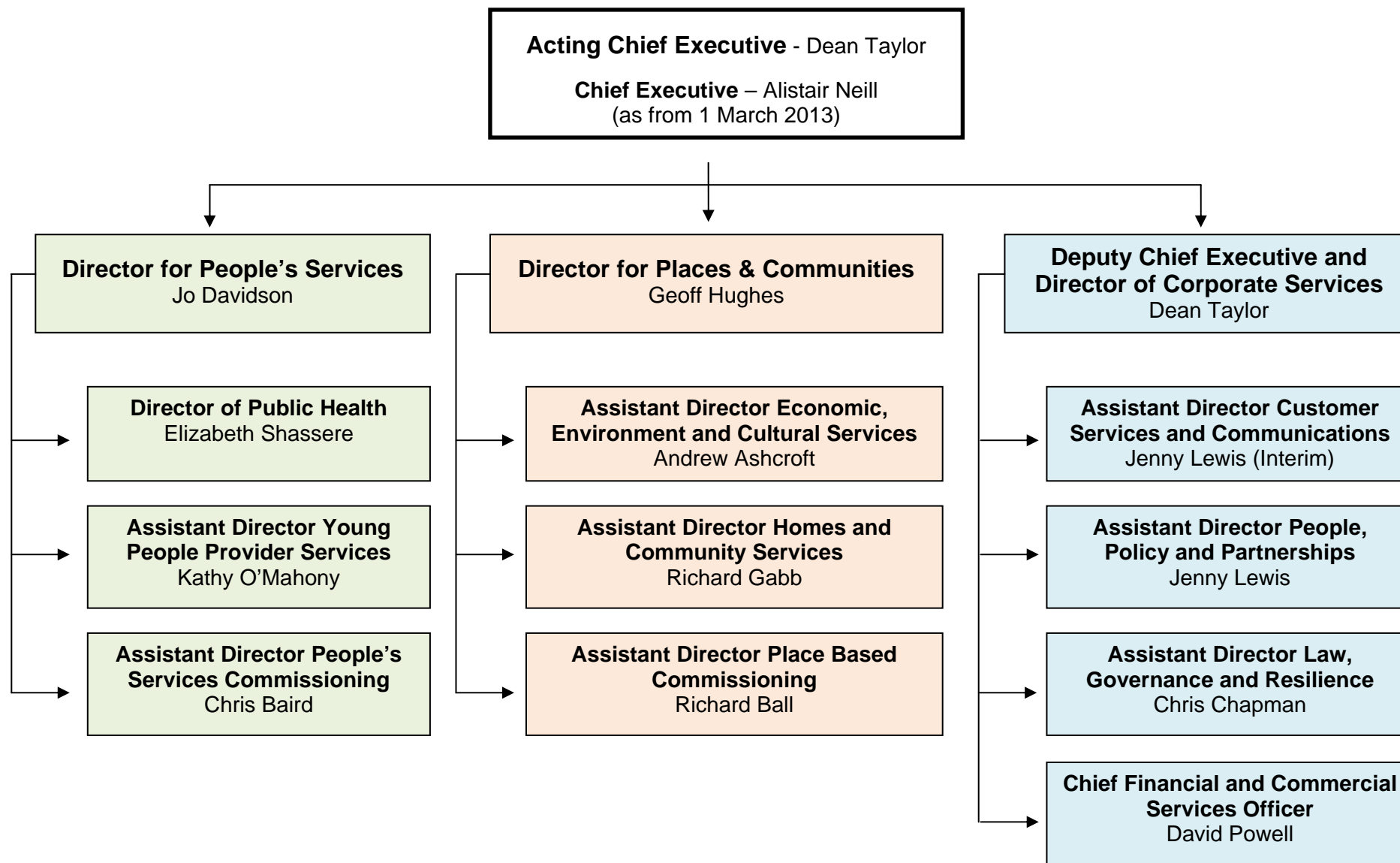
As at 12 February 2013

Governance Services, Herefordshire Council, Brockington,
35 Hafod Road, Hereford, HR1 1SH Telephone Number: 01432 260201

CABINET		Cabinet Member Support Team
Corporate Strategy and Finance:	JG Jarvis (Leader)	AM Atkinson
Corporate Services:	PD Price (Deputy Leader)	JA Hyde
Education and Infrastructure:	GJ Powell	NP Nenadich
Enterprise and Culture:	RJ Phillips	P Rone
Environment, Housing and Planning:	RB Hamilton	
Health and Wellbeing:	PM Morgan	
Major Contracts:	H Bramer	
Financial Management:	AW Johnson	
GENERAL OVERVIEW AND SCRUTINY COMMITTEE (13 Councillors):		HEALTH AND SOCIAL CARE OVERVIEW AND SCRUTINY COMMITTEE (13 Councillors):
EMK Chave (IOC) BA Durkin (Con) DW Greenow (Con) EPJ Harvey (IOC) (VC) JW Hope MBE (Con) RC Hunt (Con) TM James (LD) Brig P Jones CBE (Con) RL Mayo (Con) R Preece (Ind) A Seldon (Ind) (C) GR Swinford (Ind) DB Wilcox (Con)		PA Andrews (LD) PL Bettington (Con) WLS Bowen (Ind) MJK Cooper (Con) KS Guthrie (Con) KLV Kenyon (IOC) JG Lester (Con) MD Lloyd-Hayes (IOC) JW Millar (Con) (C) GA Powell (Ind) SJ Robertson (Ind) (VC) J Stone (Con) PJ Watts (Con)
AUDIT AND GOVERNANCE COMMITTEE (10) Councillors:		PLANNING COMMITTEE (19) Councillors:
CNH Attwood (Ind) EMK Chave (IOC) PG Cutter (Con) AJ Hempton-Smith (IOC) TM James (LD) Brig P Jones CBE (Con) PJ McCaull (Ind) JW Millar (Con) (VC) J Stone (Con) (C) Vacant (Con)		PA Andrews (LD) AN Bridges (Ind) PGH Cutter (Con) (C) Brig. P Jones CBE (Con) BA Durkin (Con) (VC) PJ Edwards (Ind) DW Greenow (Con) KS Guthrie (Con) J Hardwick (Ind) JW Hope MBE (Con) MAF Hubbard (IOC) RC Hunt (Con) JG Lester (Con) A Powers (IOC) RI Matthews (Ind) FM Norman (IOC) GR Swinford (Ind) PJ Watts (Con) Vacant
REGULATORY COMMITTEE: (10) Councillors		
CM Bartrum (LD) PL Bettington (Con) BA Durkin (Con) JW Hope MBE (Con) (C) RC Hunt (Con) (VC) Brig. P Jones CBE (Con) PJ McCaull (Ind) C Nicholls (IOC) FM Norman (IOC) GA Powell (Ind)		

THIS PAGE IS INTENTIONALLY BLANK

HEREFORDSHIRE PUBLIC SERVICES LEADERSHIP STRUCTURE – 1 NOVEMBER 2012



THIS PAGE IS INTENTIONALLY BLANK